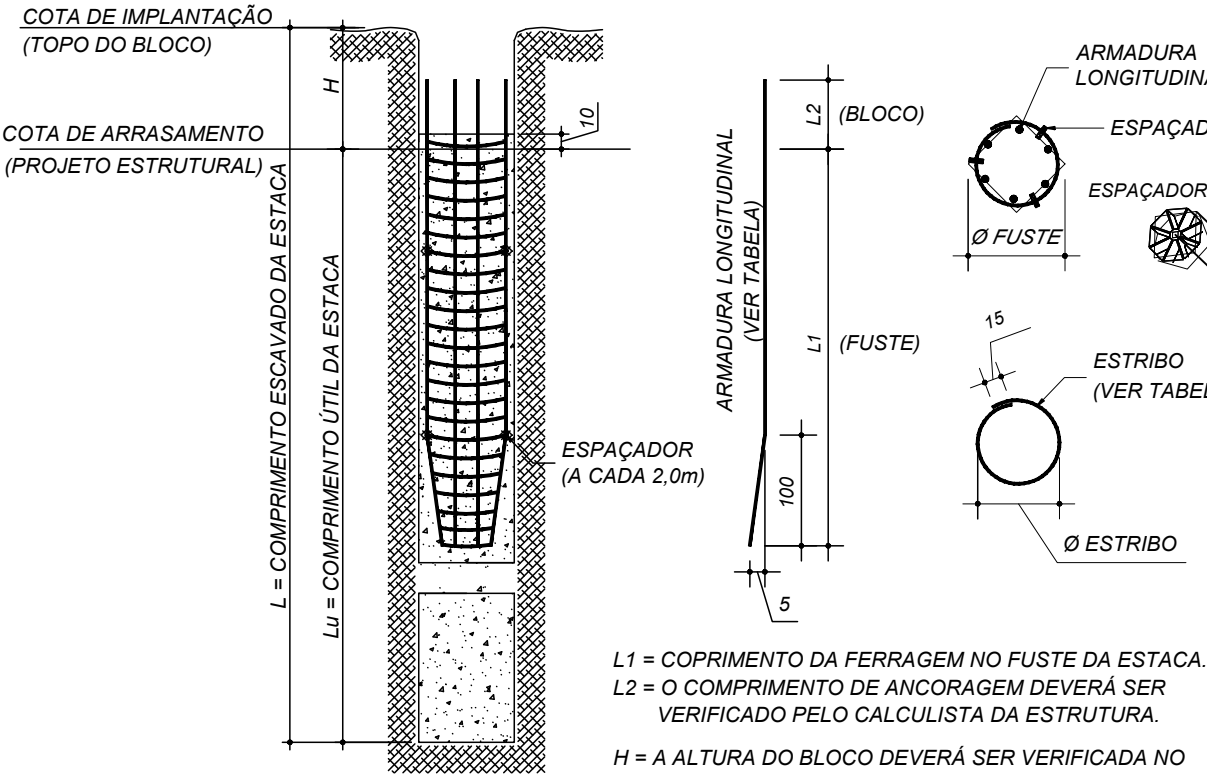


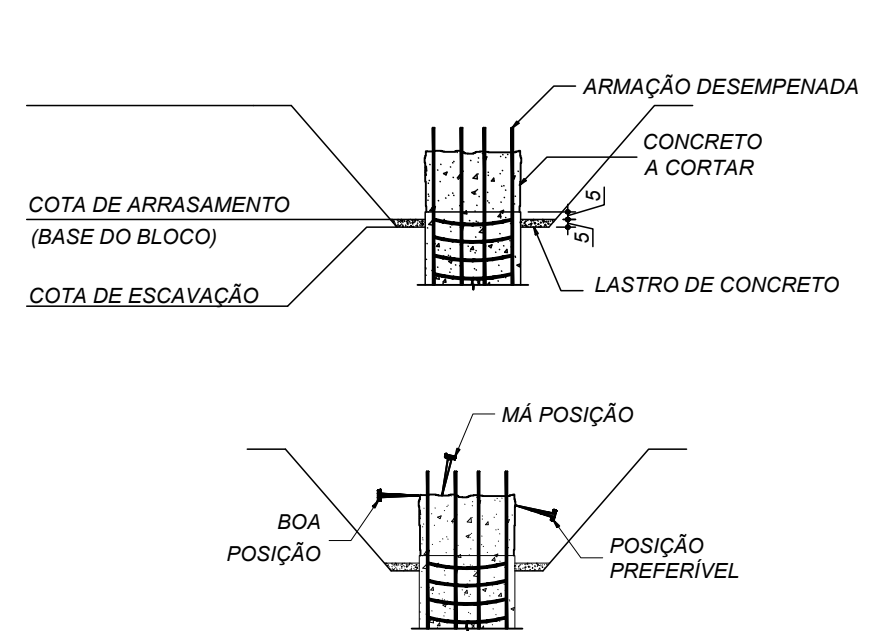
## DETALHE GENÉRICO DAS ESTACAS ESCAVADAS

SEM ESCALA



## DETALHE GENÉRICO DO ARRASAMENTO DAS ESTACAS

SEM ESCALA



## Relação do aço

34xESTACA 30cm

ACO	N	DIAM (mm)	QUANT	C.UNIT (cm)	C.TOTAL (cm)
CA50	1	6.3	748	95	71060
	2	10.0	204	250	51000

## Resumo do aço

ACO	DIAM (mm)	C.TOTAL (m)	PESO (kg)
CA50	6.3	710.6	173.9
	10.0	510	314.4

PESO TOTAL (kg)

CA50 488.3

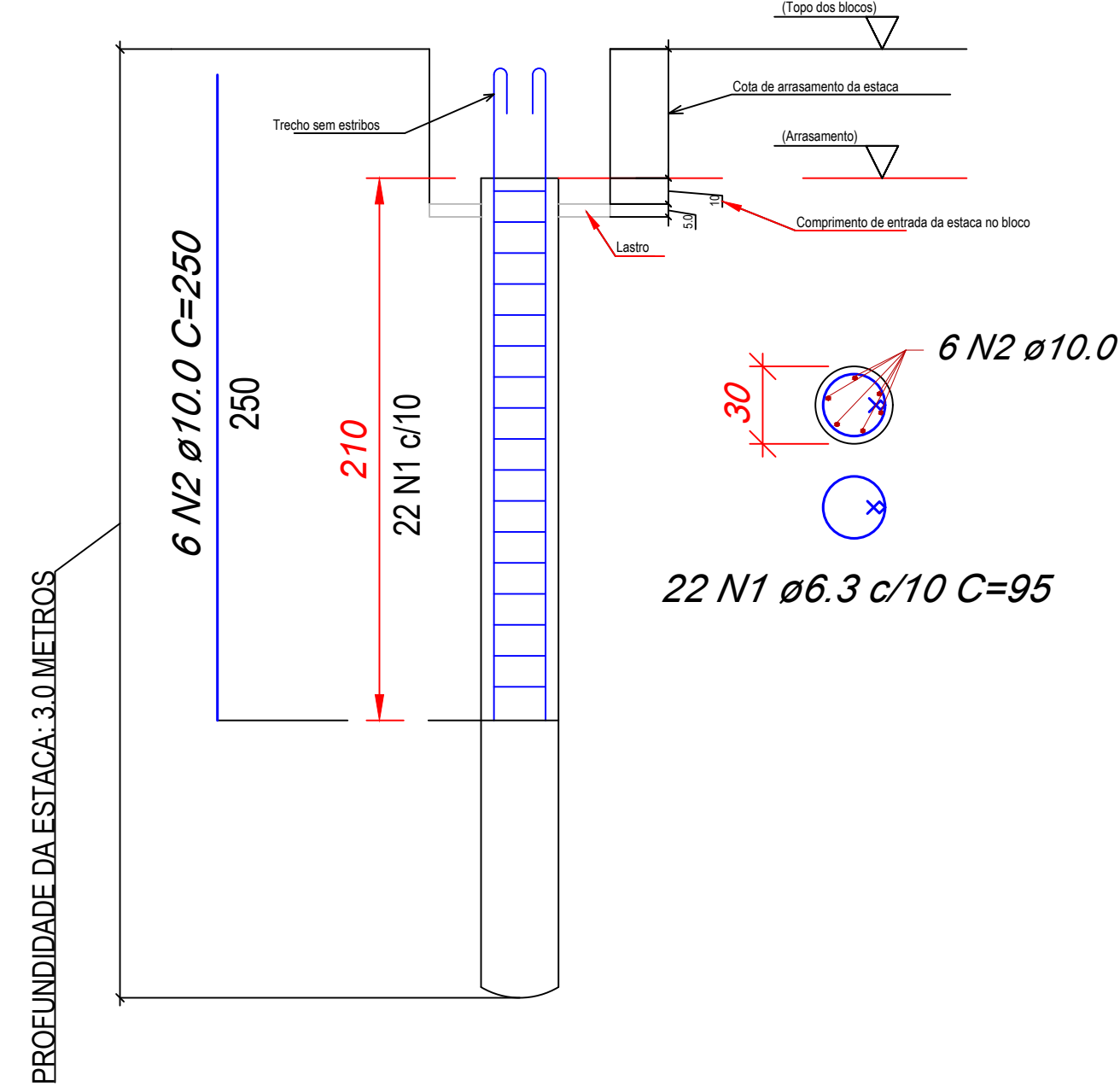
Volume de concreto (C-25) = 7,21 m³

## DETALHAMENTO DAS ESTACAS DOS BLOCOS (n 30)

X34

ESC. 1:50

Comprimento total das estacas=102 metros



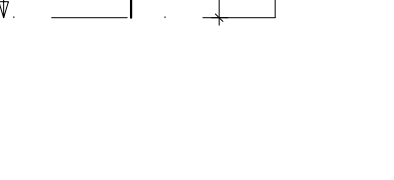
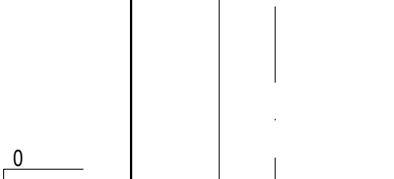
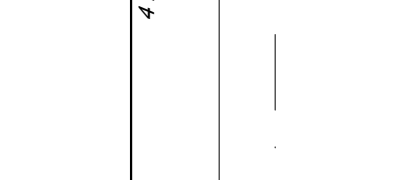
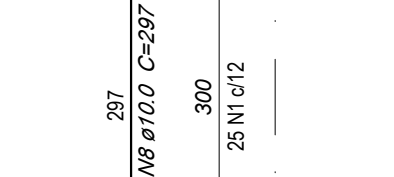
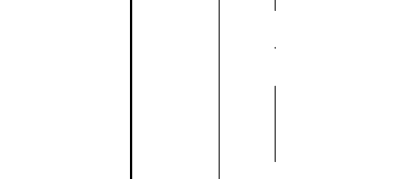
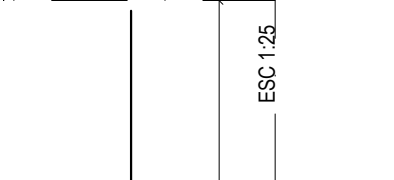
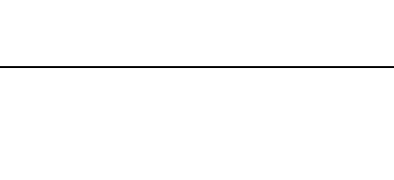
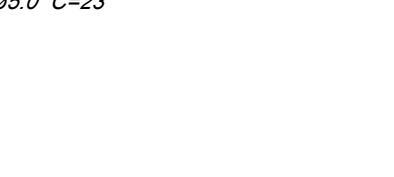
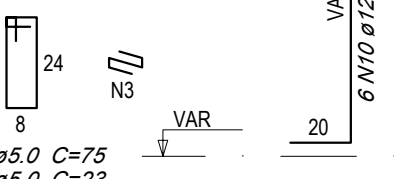
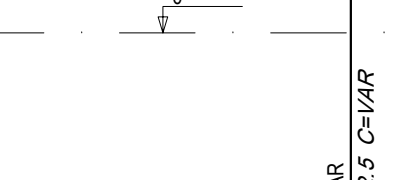
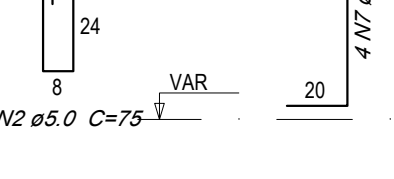
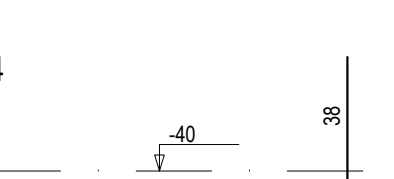
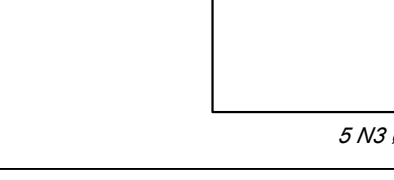
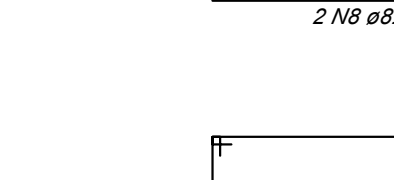
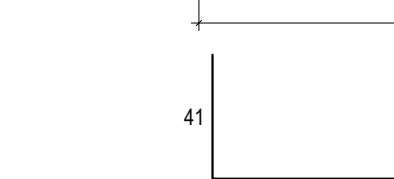
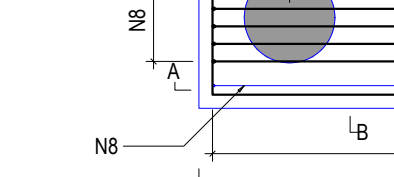
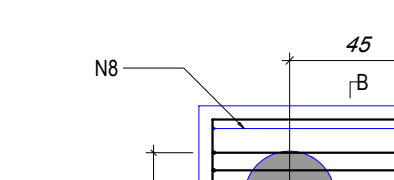
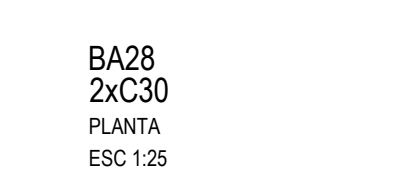
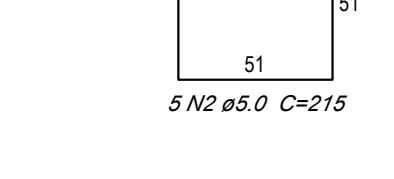
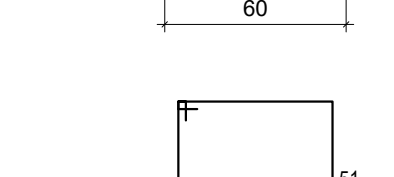
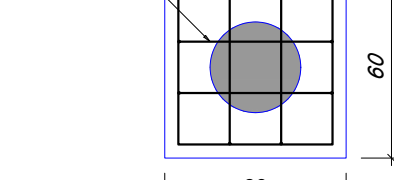
## Detalhamento das estacas escavadas Sem Escala

## DETALHE DOS BLOCOS DE COROAMENTO

BA3=BA4=BA6=BA7=BA9=BA10=BA11=BA13=BA14  
=BA16=BA17=BA18=BA20=BA21=BA22=BA23=BA24  
=BA25=BA26=BA27=BA29=BA30  
1xC30

PLANTA ESC. 1:25

CORTE A-A ESC. 1:25



BA5=BA8

2xC30

PLANTA ESC. 1:25

CORTE A-A ESC. 1:25

CORTE B-B ESC. 1:25

CORTE C-C ESC. 1:25

CORTE D-D ESC. 1:25

CORTE E-E ESC. 1:25

CORTE F-F ESC. 1:25

CORTE G-G ESC. 1:25

CORTE H-H ESC. 1:25

CORTE I-I ESC. 1:25

CORTE J-J ESC. 1:25

CORTE K-K ESC. 1:25

CORTE L-L ESC. 1:25

CORTE M-M ESC. 1:25

CORTE N-N ESC. 1:25

CORTE O-O ESC. 1:25

CORTE P-P ESC. 1:25

CORTE Q-Q ESC. 1:25

CORTE R-R ESC. 1:25

CORTE S-S ESC. 1:25

CORTE T-T ESC. 1:25

CORTE U-U ESC. 1:25

CORTE V-V ESC. 1:25

CORTE W-W ESC. 1:25

CORTE X-X ESC. 1:25

CORTE Y-Y ESC. 1:25

CORTE Z-Z ESC. 1:25

CORTE AA ESC. 1:25

CORTE BB ESC. 1:25

CORTE CC ESC. 1:25

CORTE DD ESC. 1:25

CORTE EE ESC. 1:25

CORTE FF ESC. 1:25

CORTE GG ESC. 1:25

CORTE HH ESC. 1:25

CORTE II ESC. 1:25

CORTE JJ ESC. 1:25

CORTE KK ESC. 1:25

CORTE LL ESC. 1:25

CORTE MM ESC. 1:25

CORTE NN ESC. 1:25

CORTE OO ESC. 1:25

CORTE PP ESC. 1:25

CORTE QQ ESC. 1:25

CORTE RR ESC. 1:25

CORTE SS ESC. 1:25

CORTE TT ESC. 1:25

CORTE UU ESC. 1:25

CORTE VV ESC. 1:25

CORTE WW ESC. 1:25

CORTE XX ESC. 1:25

CORTE YY ESC. 1:25

CORTE ZZ ESC. 1:25

CORTE AAA ESC. 1:25

CORTE BBB ESC. 1:25

CORTE CCC ESC. 1:25

CORTE DDD ESC. 1:25

CORTE EEE ESC. 1:25

CORTE FFF ESC. 1:25

CORTE GGG ESC. 1:25

CORTE HHH ESC. 1:25

CORTE III ESC. 1:25

CORTE JJJ ESC. 1:25

CORTE KKK ESC. 1:25

CORTE LLL ESC. 1:25

CORTE MMM ESC. 1:25

CORTE NNN ESC. 1:25

CORTE OOO ESC. 1:25

CORTE PPP ESC. 1:25

CORTE QQQ ESC. 1:25

CORTE RRR ESC. 1:25

CORTE SSS ESC. 1:25

CORTE TTT ESC. 1:25

CORTE UUU ESC. 1:25

CORTE VVV ESC. 1:25

CORTE WWW ESC. 1:25

CORTE XXX ESC. 1:25

CORTE YYY ESC. 1:25

CORTE ZZZ ESC. 1:25

CORTE AAA ESC. 1:25

CORTE BBB ESC. 1:25

CORTE CCC ESC. 1:25